



Charming Garden Home With Burj Al Arab View

Dubai, United Arab Emirates, Palm Jumeirah, The Fronds

AED 760,000/p.a.

Ref: R-688

Field Type

FIELD TYPE

For Rent

Property Status

STATUS

Rented / Request Similar

Property Type

TYPE

Villa

Bedrooms Icon

BEDROOMS

4

Bathrooms Icon

BATHROOMS

5

Area Icon

BUILT-UP AREA

5100 sq ft

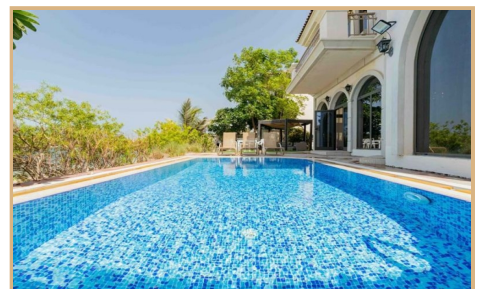
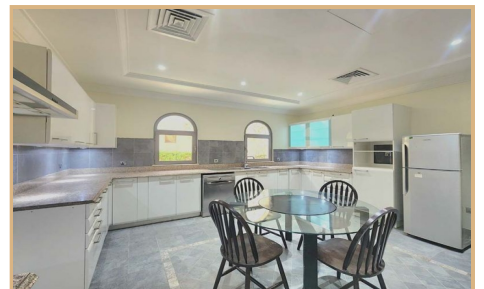
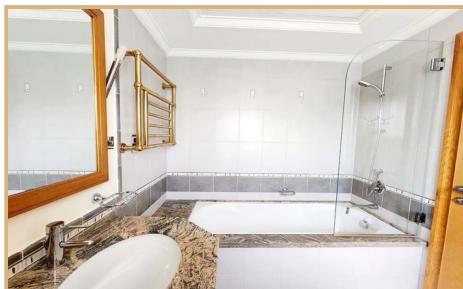
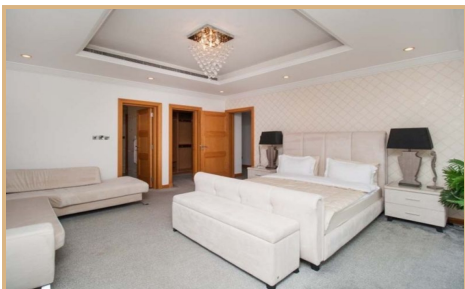
Land Icon

LAND AREA

6683 sq ft



Gallery





Property Description

Location: Dubai, United Arab Emirates, Palm Jumeirah, The Fronds

Tereza Estates is pleased to present this Charming Garden Home with Burj Al Arab view located on The Fronds of Palm Jumeirah. This very well maintained four bedroom garden home is sitting on a plot size of almost 6,700 sq.ft. and built up area of 5,100 sq.ft. spread over two floors.

This beautiful garden home comprises of welcome lounge as you enter, two family entertainment areas with direct entrance to your private garden and swimming pool overlooking the infamous Burj Al Arab and serene flow of water at your private beach of one of the most demanded Fronds of Palm Jumeirah.

Ground floor includes also enclosed kitchen along with staff quarter with separate entrance and private garage for two cars.

First floor of this charming home is where all of the four ensuite bedrooms are located, two of them with massive outdoor terrace area with the primary suite offering absolutely spectacular views of Burj Al Arab and the sea, and the other upper floor terrace overlooking peaceful community of The Fronds.

If you would like to schedule a viewing, please contact us on +971 585 365 111.

Trakheesi Permit #6510416200



Key Features

- ✓ For Rent
- ✓ Partly furnished
- ✓ Kitchen Appliances
- ✓ Study
- ✓ Central A/C
- ✓ Private Garden
- ✓ Land Size : 6683 sq ft
- ✓ Built in Wardrobes
- ✓ Pets Allowed
- ✓ Walk-in Closet
- ✓ Covered Parking
- ✓ Security
- ✓ Floor Area : 5100 sq ft
- ✓ Children's Play Area
- ✓ Private Pool
- ✓ Balcony
- ✓ Maids Room
- ✓ View of Water

