



Ground Floor Two Bedroom Pool Residence

Dubai, United Arab Emirates, Palm Jumeirah, Muraba Residences

AED 7,830,000

Ref: S-1210

Field Type

FIELD TYPE

For Sale

Property Status

STATUS

Ready to Move In

Property Type

TYPE

Apartment

Bedrooms Icon

BEDROOMS

2

Bathrooms Icon

BATHROOMS

3

Area Icon

BUILT-UP AREA

1965 sq ft

Terrace Icon

TERRACE

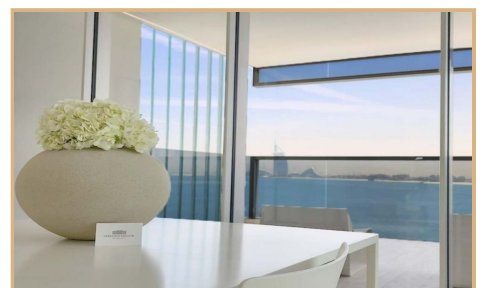
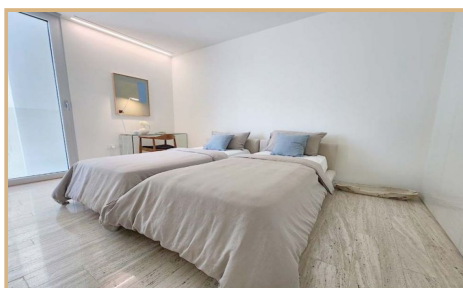
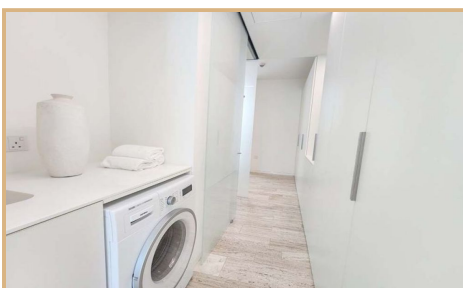
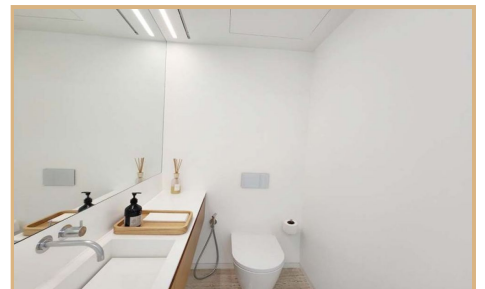
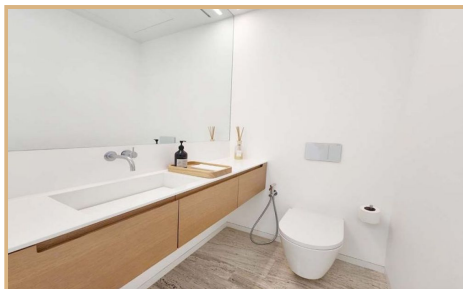
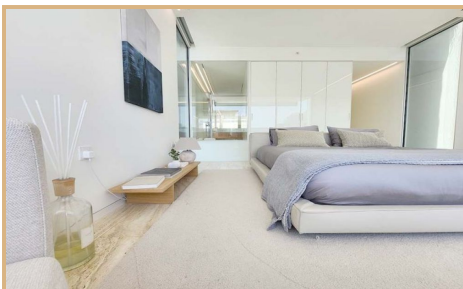
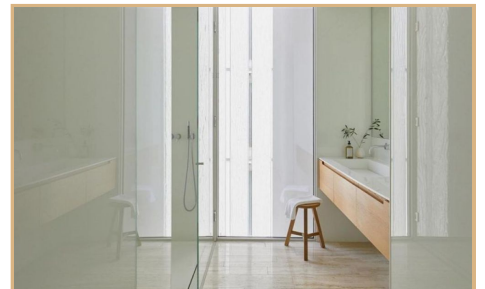
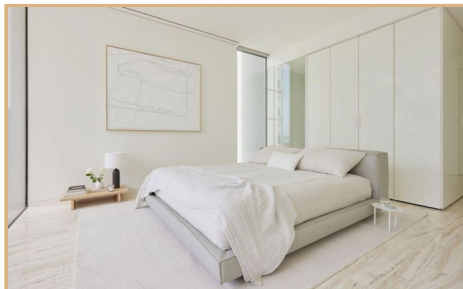
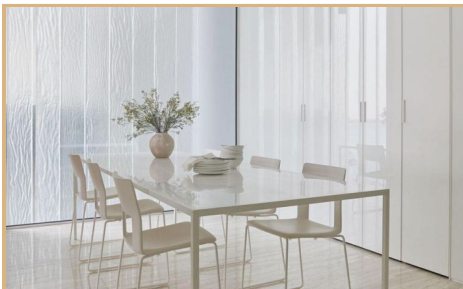
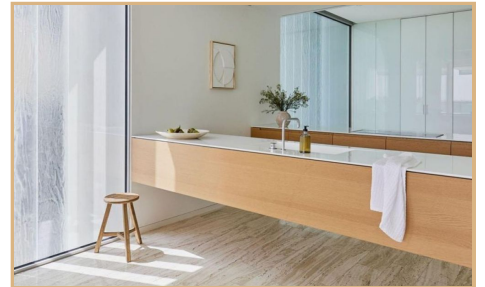
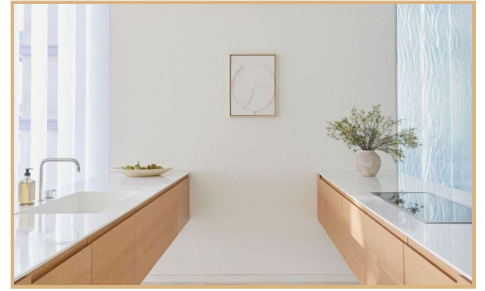
186 sq ft



TEREZAESTATES.COM

BUY | SELL | RENT

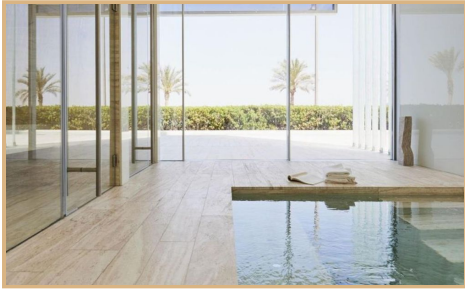
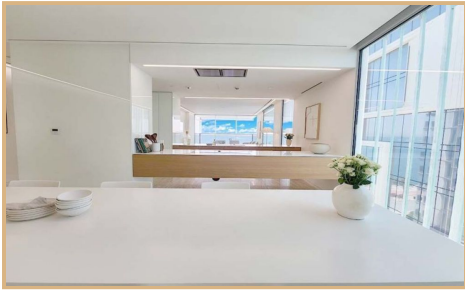
Gallery





TEREZAESTATES.COM

BUY | SELL | RENT





Property Description

Location: Dubai, United Arab Emirates, Palm Jumeirah, Muraba Residences

Tereza Estates is pleased to present this Gorgeous Two Bedroom Pool Residence on Ground Floor with direct access to the swimming pool and recreation area offering views of Burj Al Arab & Downtown Skyline across the Endless Arabian Sea with its spacious layout of 2171 sq.ft. where outdoor - indoor living space seamlessly blends and impressive architecture highlights the contrast of beautiful finishes in light clean and subtle colour palette that compliment that shimmering sunshine bliss on turquoise waters of The Arabian Sea.

This elegantly designed luxury two bedroom apartment comprises of spacious outdoor and indoor entertainment areas, including living area with its own ground floor terrace overlooking the sea, beautifully designed open plan chef's kitchen with seamlessly fitted kitchen appliances by Gaggenau and spacious dining area with lot of seamless cabinets and storage space. Both of the bedrooms are ensuite with well designed bathrooms offering both spacious walkin rainshowers by Lagares (established in 1918) as well as comfortable bathtub for ultimate home spa feeling after a long day. Built-in wardrobes that offer truly enough of storage space even for the most demanding of us with endless designer closet collections stored beautifully with integrated lightening and organised divisions by an excellent brand Rimadesio with superb quality of fixtures. This luxury apartment is very bright and offers light and airy feel also thanks to lightning fixtures well thought through by italian leading brand Panzeri (since 1947) with their eco compatible production plant worldwide, that is by now almost entirely powered by solar energy.

Muraba Residences is private and peaceful, considered an architectural gem designed by Pritzker award winning RCR Architects with its unique minimal architectural design, yet attention to detail crafted to perfection with carefully selected finishing materials, as travertine flooring with a parquette effect, elegant and functional internal doors by L'invisible, seamlessly built-in kitchen appliances by Gaggenau, impressive kitchen islands, floor to ceiling pocket windows by SKY FRAME that make the most of the Dubai skyline and sea views. Outdoor glass design feature simultaneously restricts the views into the apartment from outside as well protects from sun with extra layer for keeping your apartment cool without the excessive need of A/C. Its design is exemplary, with a minimalist outlook. Given its considerable visual aesthetic, the development also has a connection with the environment. Attention is paid to the degree of light, clean lines, high end interiors and open spaces throughout the apartment, from the kitchen all the way to the dining, living and other entertainment areas. The gym also hosts some spectacular views of the skyline and 50m long swimming pool that invites to implement that healthy morning routine is just another beautiful part of what Muraba Residences offers to its home owners. Includes also separate ladies and gentlemen spa with sauna and steam room as well as indirect private beach access at the beautiful white sandy beach of east crescent with its designated space for Muraba Residents only.

This apartment is being offered as Ready To Move In/Vacant On Transfer.

Trakheesi Permit #1340880662



Key Features

- ✓ For Sale
- ✓ Direct Pool Access
- ✓ 24/7 Security
- ✓ Pet Friendly
- ✓ Laundry Room
- ✓ Gaggenau Kitchen Appliances
- ✓ Children's Play Area
- ✓ Floor Area : 1965 sq ft
- ✓ Sea View
- ✓ Gym & Swimming Pool
- ✓ Maids Room
- ✓ Spacious Terraces
- ✓ Central A/C
- ✓ View of Water
- ✓ Beach Access
- ✓ Burj Al Arab View
- ✓ Spa & Vitality Pool
- ✓ Built in Wardrobes
- ✓ Fully Fitted
- ✓ Covered Parking
- ✓ View of Landmark

