






# Contemporary Four Bedroom | Private Swimming Pool

**AED 51,059,000**

Ref: S-670

**Orla By Omniyat, Dorchester Collection,  
Palm Jumeirah, Dubai**

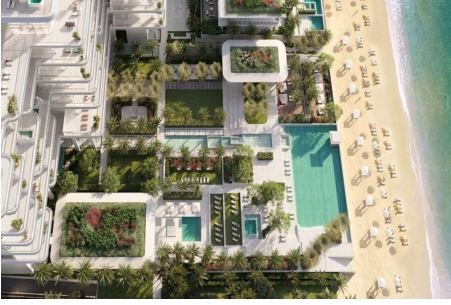
-  Field Type: For Sale
-  Property Status: Featured
-  Property Type: Penthouse
-  Number of Bedrooms: 4
-  Number of Bathrooms: 7
-  Area: 7309 sq ft
-  Terrace: 2863 sq ft



**TEREZAESTATES.COM**

BUY | SELL | RENT

# Gallery



TEREZAESTATES.COM

BUY | SELL | RENT

# Property Description

**Location:** Orla By Omniyat, Dorchester Collection, Palm Jumeirah, Dubai

Tereza Estates is pleased to present this Impressive Contemporary four bedroom simplex apartment in Orla with its massive size of over 10,527 sq.ft. where outdoor - indoor living space blends seamlessly with the views of the turquoise Arabian Sea and beautiful skyline of Dubai enjoyable from the comfort of your spacious terrace that spreads out to over 3,337 sq.ft. with your very own private swimming pool.

Managed exclusively by Dorchester Collection and situated on the currently most demanded address in the world - Palm Jumeirah, Dubai, Orla offers truly lifestyle beyond compare. Fully fitted and finished to the highest quality, with unique interior touches by a world-class designer that provokes luxury and aesthetics, embraces the brightness and liveness of living spaces with its floor to ceiling windows with ceiling heights of 3,2m and upto 6,5 meters in the double height ceiling plans of the living areas. Beautifully designed contemporary and elegant outdoor terrace in every apartment allows you to enjoy the breathtaking views of sunsets at the sea and Dubai's admirable skyline charm.

ORLA & ORLA INFINITY truly contains an abundance of resident-only experiences and facilities at your fingertips, all managed by The Dorchester Collection, that give you a five star experience at the comfort of your home. This iconic luxury development combines Orla Infinity that spreads over 16,600 sq.m. of beachfront resort - like lifestyle at the discretion of residential community where you can enjoy the best that Dubai's lifestyle has to offer. Orla Infinity comprises of 20 residences only compared to 91 Residences in Orla spreaded over another beachfront resort like plot of over 29,800 sq.m. that include also two beachfront mansions as well as three Sky Palaces, apart from very well designed spacious two, three and four bedroom apartments.

Palm Jumeirah is an exclusive destination intimately connected to the sea, offering unparalleled beauty. Nearby, you'll discover Dubai's finest restaurants, clubs, and beach resorts, providing a world-class experience. The wonders of Dubai are easily accessible, ensuring that every captivating sight is within your reach. Situated on a beachfront plot at the apex of the Palm's crescent, this prime position offers uninterrupted 270° views, encompassing Dubai's stunning skyline and the turquoise waters of the Arabian Gulf.

If you would like to know more about Orla or Orla Infinity, please contact us on [+971585365111](tel:+971585365111) or fill an inquiry form with your details to request a call back.

Trakheesi Permit #0459529806 ; Estimated Completion Date: Q4 2026



TEREZAESTATES.COM

BUY | SELL | RENT

# Additional Info

For Sale	Floor Area : 7309 sq ft	Dorchester Collection Managed
Designed by Foster & Partners	Interior by Yodezeen Architects	Massive Outdoor Terrace
Private Swimming Pool	Marina Skyline View	Royal Atlantis View
Beachfront	Private Beach	Concierge
24/7 Security	Maids Room	Walk-In Closet
Fully Fitted		

# Amenities

Private Swimming Pool	Private Beach	Concierge
Maids Room	Private Pool	Shared Gym
Shared & Private Spa	Children's Play Area	Covered 4 Parkings
Pets Allowed	Pets Spa	



**TEREZAESTATES.COM**

**BUY | SELL | RENT**

Mobile: **+971 585 365 111**

Email: [hello@terezaestates.com](mailto:hello@terezaestates.com)

TEREZA REAL ESTATE LLC

ORN: 32523, BRN: 35616

Dubai, United Arab Emirates

<https://terezaestates.com>