



Fully Furnished Penthouse by Dorchester Collection

Dubai, United Arab Emirates, Downtown & Burj Khalifa District, Lana Residences, Dorchester Collection

Price on Application

Ref: S-663



FIELD TYPE

For Sale



STATUS

Sold / Request Similar



TYPE

Penthouse



BEDROOMS

4



BATHROOMS

5

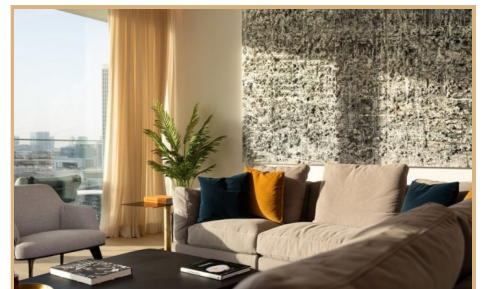
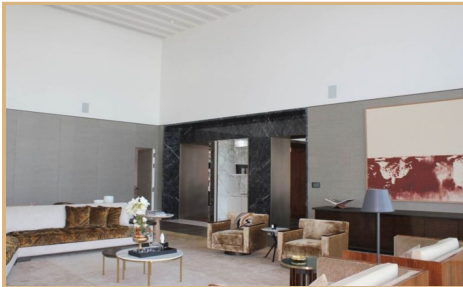


BUILT-UP AREA

7934 sq ft



Gallery





Property Description

Location: Dubai, United Arab Emirates, Downtown & Burj Khalifa District, Lana Residences, Dorchester Collection

Tereza Estates is pleased to present this Glamorous Fully Furnished Penthouse in The Residences by Dorchester Collection Dubai situated in The Burj Khalifa District on the Dubai Water Canal with its dedicated yacht berths and variety of fine dining options within your exquisite residence that is located on a waterfront promenade.

This Elegant Penthouse is fully furnished and designed by world renowned chic design duo Gilles & Boissier and spreads over massive area of 7934 sq.ft. overlooking the mesmerizing lights of Downtown's skyline and The Burj Khalifa.

Finished to the highest quality, with a variety of unique interior touches as checkerboard marble entry foyers, marble bathrooms with chevron stone flooring or oak wooden flooring across living rooms and bedrooms to name a few and a seamless home automation system across your entire residence of course.

This fully furnished luxury penthouse is the ultimate address that offers absolutely the best of lifestyle choices when it comes to urban living in the iconic Downtown Dubai.

The Residences Dorchester Collection Dubai features 39 ultra-luxury elite residences and is set to offer an unmatched luxury lifestyle for the residents with a spectrum of luxury living and leisure facilities including an outdoor pool overlooking the stunning downtown skyline, fully equipped gym with yoga studios, dining and function room with conference facilities and lounges. Exclusively managed by The Dorchester Collection residents can benefit from a variety of concierge services as well as a la carte services tailored individually.

Trakheesi Permit #1399324784

Estimated Completion Date: Q2 2023



Key Features

- ✓ For Sale
- ✓ Floor Area : 7934 sq ft
- ✓ Dorchester Collection managed
- ✓ Designed by Foster & Partners
- ✓ Interiors by Gilles & Boissier Private Infinity-Ed
- ✓ Spacious Terrace
- ✓ Double Height Ceilings
- ✓ Show Kitchen & Prep Kitchen
- ✓ 5 Star Experiences At Home

Amenities

- ✓ Main VIP & Marina Lobby
- ✓ Infinity-Edge Lap Pool
- ✓ Triple-Height Gym
- ✓ Doorman & Porter Services
- ✓ Spa & Salon
- ✓ Pets Spa
- ✓ Kids Play Area
- ✓ Cinema Room
- ✓ Meeting Rooms & Lounge
- ✓ 24/7 Concierge
- ✓ Housekeeping & Maintenance
- ✓ Bespoke In-Residence Catering
- ✓ Dining Events & Functions
- ✓ Floristry Services
- ✓ Valet Parking
- ✓ 24/7 Premium Security
- ✓ Hotel Facilities at The Lana
- ✓ Dorchester Collection
- ✓ Beach access at The One Palm

