



Beachfront Duplex Sea & Skyline View

Dubai, United Arab Emirates, Palm Jumeirah, Orla By Omniyat, Dorchester Collection

AED 61,815,600

Ref: S-656



FIELD TYPE

For Sale



STATUS

Featured



TYPE

Apartment



BEDROOMS

4



BATHROOMS

7



BUILT-UP AREA

8837 sq ft



TERRACE

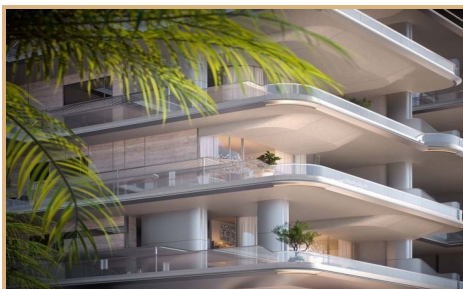
3724 sq ft



TEREZAESTATES.COM

BUY | SELL | RENT

Gallery





Property Description

Location: Dubai, United Arab Emirates, Palm Jumeirah, Orla By Omniyat, Dorchester Collection

Tereza Estates is pleased to present this Impressive Contemporary Four Bedroom Duplex Apartment in Orla with its massive size of over 8837 sq.ft. where outdoor - indoor living space blends seamlessly with the views of the turquoise Arabian Sea and beautiful skyline of Dubai enjoyable from the comfort of your spacious terrace that spreads out to almost 3724 sq.ft.

Managed exclusively by Dorchester Collection and situated on the currently most demanded address in the world - Palm Jumeirah, Dubai, Orla offers truly lifestyle beyond compare. Fully fitted and finished to the highest quality, with unique interior touches by a world-class designer that provokes luxury and aesthetics, embraces the brightness and liveness of living spaces with its floor to ceiling windows with ceiling heights of 3,2m and upto 6,5 meters in the double height ceiling plans of the living areas. Beautifully designed contemporary and elegant outdoor terrace in every apartment allows you to enjoy the breathtaking views of sunsets at the sea and Dubai's admirable skyline charm.

ORLA & ORLA INFINITY truly contains an abundance of resident-only experiences and facilities at your fingertips, all managed by The Dorchester Collection, that give you a five star experience at the comfort of your home. This iconic luxury development combines Orla Infinity that spreads over 16,600 sq.m. of beachfront resort - like lifestyle at the discretion of residential community where you can enjoy the best that Dubai's lifestyle has to offer. Orla Infinity comprises of 20 residences only compared to 91 Residences in Orla spreaded over another beachfront resort like plot of over 29,800 sq.m. that include also two beachfront mansions as well as three Sky Palaces, apart from very well designed spacious two, three and four bedroom apartments.

Palm Jumeirah is an exclusive destination intimately connected to the sea, offering unparalleled beauty. Nearby, you'll discover Dubai's finest restaurants, clubs, and beach resorts, providing a world-class experience. The wonders of Dubai are easily accessible, ensuring that every captivating sight is within your reach. Situated on a beachfront plot at the apex of the Palm's crescent, this prime position offers uninterrupted 270° views, encompassing Dubai's stunning skyline and the turquoise waters of the Arabian Gulf.

If you would like to know more about Orla or Orla Infinity, please contact us on [+971585365111](tel:+971585365111) or fill an inquiry form with your details to request a call back.

Trakheesi Permit #0459529806 ; Estimated Completion Date: Q4 2026



Key Features

- ✓ For Sale
- ✓ Floor Area : 8837 sq ft
- ✓ Dorchester Collection Managed
- ✓ Designed by Foster & Partners
- ✓ Interior by Yodezeen Architects
- ✓ Massive Outdoor Terrace
- ✓ Private Swimming Pool
- ✓ Marina Skyline View
- ✓ Royal Atlantis View
- ✓ Beachfront
- ✓ Private Beach
- ✓ Concierge
- ✓ 24/7 Security
- ✓ Maids Room
- ✓ Walk-In Closet
- ✓ Fully Fitted

Amenities

- ✓ Private Swimming Pool
- ✓ Private Beach
- ✓ Concierge
- ✓ Maids Room
- ✓ Private Pool
- ✓ Shared Gym
- ✓ Shared & Private Spa
- ✓ Children's Play Area
- ✓ Covered 4 Parkings
- ✓ Pets Allowed
- ✓ Pets Spa

