



Gorgeous Beachfront Villa for Rent on Palm Jumeirah

Dubai, United Arab Emirates, Palm Jumeirah, The Fronds

AED 850,000/p.a.

Ref: R-1160



FIELD TYPE

For Rent



STATUS

Rented / Request Similar



TYPE

Villa



BEDROOMS

4



BATHROOMS

6



BUILT-UP AREA

5100 sq ft



LAND AREA

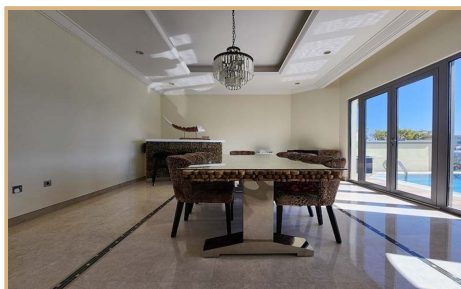
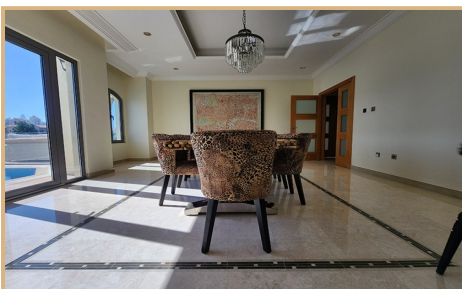
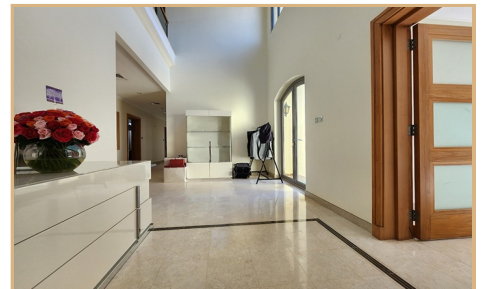
6700 sq ft



TEREZAESTATES.COM

BUY | SELL | RENT

Gallery





TEREZAESTATES.COM

BUY | SELL | RENT





TEREZAESTATES.COM

BUY | SELL | RENT





Property Description

Location: Dubai, United Arab Emirates, Palm Jumeirah, The Fronds

Tereza Estates is pleased to present this Beautiful Garden Home with Burj Al Arab view for rent located on The Fronds of Palm Jumeirah. This very well maintained four bedroom garden home is sitting on a plot size of almost 6,700 sq.ft. and built up area of 5,100 sq.ft. spreaded over two floors. This gorgeous family garden home comprises of welcome lounge as you enter, two family entertainment areas with direct entrance to your private garden and swimming pool deck equipped with safety glass features for children and pets. Swimming pool and landscaped garden area are overlooking the infamous Burj Al Arab and serene flow of water at your private beach on one of the most demanded Fronds of Palm Jumeirah that offers tranquil living and privacy while being just minutes away from Nakheel Mall, West Beach and The Pointe. Ground floor of this Palm Jumeirah villa for rent includes also enclosed kitchen along with staff quarter with separate entrance and private enclosed garage for two cars, additionally two more outdoor parking spaces in front of the villa.

First floor of this charming home is where all of the four ensuite bedrooms are located, two of them with massive outdoor terrace area with the primary suite offering absolutely spectacular views of Burj Al Arab and the sea, and the other upper floor terrace overlooking peaceful community of The Fronds landscaped with Palm Trees and beautiful greenery. Staircase has been also equipped with another safety feature for children and/or small pets. This villa is being offered unfurnished with possibility of semi or fully furnished upon agreement. Garden Homes of Palm Jumeirah have been one the most favourite family friendly communities in Dubai for over two decades now offering absolutely unbeatable peaceful beachfront living experience within the vibrant metropole of Dubai.

Palm Jumeirah is an exclusive destination intimately connected to the sea, offering unparalleled beauty. Nearby, you'll discover Dubai's finest restaurants, clubs, and beach resorts, providing a world-class experience. The wonders of Dubai are easily accessible, ensuring that every captivating sight is within your reach. Situated on a beachfront plot at the Fronds of Palm Jumeirah, this prime position offers an unrivaled lifestyle experience encompassing Dubai's stunning beachfront living and the turquoise waters of the Arabian Gulf.

If you would like to know more about this Garden Home on Palm Jumeirah for rent, please contact us on **+971585365111** or fill an inquiry form with your details to request a call back.



Key Features

- ✓ For Rent
- ✓ Private Villa with Pool & Garden
- ✓ Downtown Skyline Views
- ✓ Staff's Quarter
- ✓ Land Size : 6700 sq ft
- ✓ High 24/7 Security
- ✓ Beachfront Lifestyle
- ✓ Maid's Room
- ✓ Floor Area : 5100 sq ft
- ✓ Burj Al Arab View
- ✓ Fully Equipped Kitchen
- ✓ Enclosed Garage

Amenities

- ✓ Private Beach
- ✓ 24/7 Security
- ✓ Private Swimming Pool
- ✓ Gated Community
- ✓ Private Garden
- ✓ Beachfront Living

