



Four Bedroom Duplex with Pool & Sunset Views in SLS The Palm

Dubai, United Arab Emirates, Palm Jumeirah, SLS Residences

AED 35,829,000

Ref: S-1120



FIELD TYPE

For Sale



STATUS

Featured



TYPE

Apartment



BEDROOMS

4



BATHROOMS

5

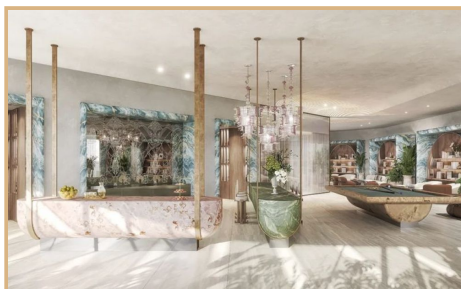
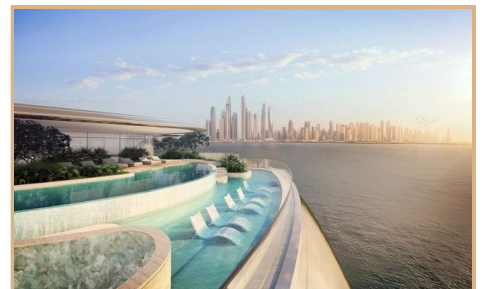


BUILT-UP AREA

6398 sq ft



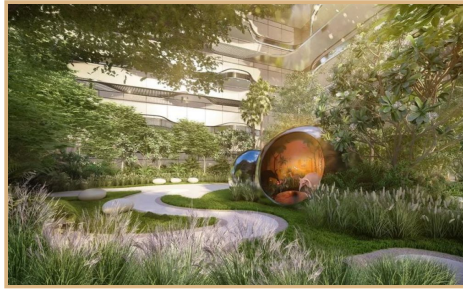
Gallery





TEREZAESTATES.COM

BUY | SELL | RENT





Property Description

Location: Dubai, United Arab Emirates, Palm Jumeirah, SLS Residences

Tereza Estates is pleased to present this Four Bedroom Duplex with Pool & Sunset Views for sale in SLS The Palm in Royala SLS Residences located on the currently most demanded address in the world - The Palm Jumeirah, Dubai. SLS Residences The Palm are nestled along the iconic Palm Jumeirah's West Crescent offering absolutely stunning views of the sunset over the open sea & Dubai Marina Skyline, as well as views of The Atlantis The Royal and picturesque residential villas at The Frons.

This luxury four bedroom duplex apartment with private pool for sale in SLS Residences The Palm comprises of a generous layout of 6398 sq.ft., where the architecture & interior seamlessly integrates with the natural beauty of the surroundings, creating a seamless connection between indoor and outdoor living space. Indoor area of this stunning apartment comprises of 4664 sq.ft., where outdoor terrace spreads over 1732 sq.ft. offering a unique private sanctuary vibe.

Each residence is a canvas of modern design, seamlessly blending functionality with aesthetic appeal, from the moment you step into the grand lobby, adorned with exquisite finishes this exclusive residential masterpiece is a harmonious fusion of lifestyle opulence and contemporary design, boasting a skyline silhouette that captivates the essence of elegance. Bespoke interiors in the expansive residences that offer views embraced by double height ceilings and floor to ceiling windows throughout the residence, beautifully designed open plan kitchens and spacious bedrooms with ensuite bathrooms as well as walk in closets, each space is an ode to refined living. Being offered fully fitted with kitchen appliances and space to embrace your creativity and personal touch to interior design and furnishing your residence.

Royal SLS Residences The Palm redefines luxury living in Dubai, blending sophistication with an unrivaled coastal experience and world class amenities within your private residence, including private beach with infinity swimming pool, multiple Boardrooms and Private Dining Rooms with private chef's table, or treatment rooms and fitness area dedicated to wellness and healthy lifestyle. Additionally, the residences will encompass The Social House, which will feature a boutique fitness studio space, multiple private dining lounges, high-end games area, kids club, guest rooms, indoor and outdoor gym areas, and a private cinema room spanning approximately to 1000 sqm, to cater to every lifestyle need of SLS The Palm residents. Apart from all this incredible amenities that makes you want to stay "at home" all the time, ROYAL SLS Residences The Palm will also offer a mix of essential and on-demand / a la carte services to perfect that luxury lifestyle experience only Dubai can offer. Indulge in the pinnacle of comfort with these state-of-the-art amenities that cater to every aspect of a luxurious lifestyle. Whether you're unwinding in the rooftop infinity pool overlooking the city's skyline, rejuvenating at the spa, or savoring world-class cuisine at the on-site restaurants, Royal SLS Residences redefine the meaning of lifestyle experience.

The residences themselves are a testament to contemporary elegance, featuring bespoke interiors that exude sophistication. Floor-to-ceiling windows invite natural light to dance across the meticulously curated spaces, enhancing the feeling of openness and serenity. Each residence is a canvas of modern design, seamlessly blending functionality with aesthetic appeal. This exclusive residential masterpiece is a harmonious fusion of lifestyle opulence and contemporary design, boasting a skyline silhouette that captivates the essence of modern elegance.

Royal SLS Residences offer a sanctuary where every detail is meticulously crafted to elevate the art of living. From the moment you step into the grand lobby, adorned with exquisite finishes, to the expansive residences that offer panoramic views embraced by double height ceilings and floor to ceiling windows throughout the residence, each space is an ode to refined living. The architecture seamlessly integrates with the natural beauty of the surroundings, creating a seamless connection between indoor and outdoor living.

Royal SLS Residences The Palm stands as a testament to Dubai's commitment to excellence, offering residents a lifestyle experience beyond compare. With its prime location, the development provides not just a residence, but a gateway to a



TEREZAESTATES.COM

BUY | SELL | RENT

world where luxury knows no boundaries. Welcome to a haven where every moment is a celebration of the extraordinary - celebration of YOU - welcome to Roya SLS Residences at The Palm Jumeirah, Dubai.

If you would like to know more about ROYA SLS Residences The Palm, please contact us on **+971585365111** or fill an inquiry form with your details to request a call back and we will be looking forward to arrange a private presentation for you along with answering any questions that you may have about your future luxury lifestyle home.

Estimated Completion Date: Q2 2026 ; Trakheesi Permit #: 0981067759



Key Features

- ✓ For Sale
- ✓ Accor Benefits Program
- ✓ 20% off Worldwide
- ✓ Architecture by LACASA
- ✓ The Social House
- ✓ Maid's Room
- ✓ Floor Area : 6398 sq ft
- ✓ VVIP Global Status
- ✓ Resort Style Living
- ✓ Beach Baroque Interiors
- ✓ Concierge Services
- ✓ Pet Friendly Community
- ✓ SLS Worldwide Membership
- ✓ Accor Live Limitless
- ✓ Private Beach
- ✓ Interiors by Studio Carter
- ✓ Doormen & Valet Parking
- ✓ 113 Residential Units Only

Amenities

- ✓ Unrivaled Amenities
- ✓ A La Carte Services
- ✓ Private Dining Rooms
- ✓ Private Beach
- ✓ High-End Games Area
- ✓ Outdoor Gym
- ✓ Stand Up Paddle Board Storage
- ✓ Concierge Services
- ✓ Boardrooms & Meeting Rooms
- ✓ Chef's Table
- ✓ Kids Pool
- ✓ Private Cinema Room
- ✓ Spa & Treatment Rooms
- ✓ 24/7 Security
- ✓ Doormen & Valet Parking
- ✓ The Social House
- ✓ Infinity Swimmig Pool
- ✓ Kids Area
- ✓ The Studio Boutique Fitness
- ✓ BBQ Area

